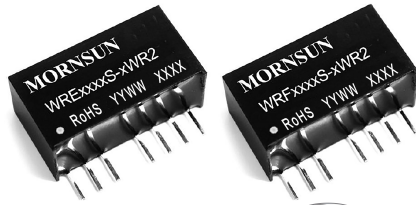


DC/DC Converter

WRE_S - 3WR2 & WRF_S - 3WR2 Series

MORNSUN®

3W, Wide input voltage, isolated & regulated dual / single output DC/DC converter



Patent Protection
CE Report UK Report CB RoHS
EN62368-1 BS EN62368-1 IEC62368-1

FEATURES

- Compact SIP package
- Wide input voltage range (2:1)
- Operating temperature range: -40°C to +85°C
- I/O Isolation test voltage 3k VDC
- Short circuit protection (self-recovery)
- High power density
- Remote On/Off
- Meets EN60950 standards

WRE_S-3WR2 & WRF_S-3WR2 series are isolated 3W DC-DC converter products with a wide 2:1 input voltage range and input isolation is tested with 3000VDC. The product has a relatively compact SIP plastic package, and features high efficiency, operating temperature of -40°C to +85 °C. The smaller size and fine cost design make the converter an ideal solution in communication, instruments, and industrial electronics applications.

Selection Guide

Certification	Part No.	Input Voltage (VDC)		Output		Ripple&noise (mVp-p) Typ./Max.	Full Load Efficiency (%) Min./Typ.	Capacitive Load ^② (μF)Max.
		Nominal (Range)	Max. ^①	Voltage(VDC)	Current(mA) Max./Min.			
EN	WRE0505S-3WR2	5 (4.5-9)	11	±5	±250/±13	40/75	72/74	1000
	WRE0512S-3WR2			±12	±104/±5		75/77	470
	WRE0515S-3WR2			±15	±83/±4		75/77	330
	WRF0505S-3WR2			5	500/25		71/73	2200
	WRF0509S-3WR2			9	278/14		72/74	1000
	WRF0512S-3WR2			12	208/10		75/77	680
	WRF0515S-3WR2			15	167/8		72/74	470
	WRE1205S-3WR2	12 (9-18)	20	±5	±300/±15	70/100	76/78	1000
	WRE1212S-3WR2			±12	±125/±6		77/79	470
	WRE1215S-3WR2			±15	±100/±5		78/80	330
	WRF1203S-3WR2			3.3	758/38		73/75	2700
	WRF1205S-3WR2			5	600/30		74/76	2200
	WRF1209S-3WR2			9	333/17		77/79	1000
	WRF1212S-3WR2			12	250/13	100/150	80/82	680
	WRF1215S-3WR2			15	200/10		81/83	470
	WRF1224S-3WR2			24	125/6		79/81	330
	WRE2405S-3WR2	24 (18-36)	40	±5	±300/±15	40/75	77/79	1000
	WRE2409S-3WR2			±9	±167/±8		79/81	680
	WRE2412S-3WR2			±12	±125/±6		81/83	470
	WRE2415S-3WR2			±15	±100/±5		81/83	330
	WRF2403S-3WR2			3.3	758/38		72/74	2700
	WRF2405S-3WR2			5	600/30		79/81	2200
	WRF2409S-3WR2			9	333/17	100/150	81/83	1000
EN/IEC	WRF2412S-3WR2			12	250/13		81/83	680
	WRF2415S-3WR2			15	200/10		81/83	470
	WRF2424S-3WR2			24	125/6		81/83	330
	WRE4805S-3WR2	48 (36-75)	80	±5	±300/±15	40/75	77/79	1000
	WRE4812S-3WR2			±12	±125/±6		80/82	470
	WRE4815S-3WR2			±15	±100/±5		80/82	330
EN	WRF4803S-3WR2	48	80	3.3	758/38	100/150	73/75	2700

MORNSUN®

MORNSUN Guangzhou Science & Technology Co., Ltd.

2025.04.01-B/5

Page 1 of 6

MORNSUN Guangzhou Science & Technology Co., Ltd. reserves the copyright and right of final interpretation

EN/BS EN	WRF4805S-3WR2	(36-75)		5	600/30	40/75	74/76	2200
	WRF4812S-3WR2			12	250/13		78/80	680
	WRF4815S-3WR2			15	200/10	70/100	82/84	470

Note:

① Exceeding the maximum input voltage may cause permanent damage;

② For the dual output modules, the capacitive loads of positive and negative outputs are the same.

Input Specifications

Item	Operating Conditions		Min.	Typ.	Max.	Unit
Input Current (full load/no-load)	5VDC Input		--	800/60	846/65	mA
	12VDC Input	3.3V Output	--	277/25	286/30	
		Others	--	314/25	338/30	
	24VDC Input	3.3V Output	--	140/8	145/13	
		Others	--	154/8	163/13	
	48VDC Input	3.3V Output	--	69/3	72/10	
		Others	--	78/3	85/10	
Reflected Ripple Current	5VDC Input		--	20	--	
	12VDC Input		--	20	--	
	24VDC Input		--	55	--	
	48VDC Input		--	55	--	
Surge Voltage (1sec. max.)	5VDC Input		-0.7	--	12	VDC
	12VDC Input		-0.7	--	25	
	24VDC Input		-0.7	--	50	
	48VDC Input		-0.7	--	100	
Starting Voltage	5VDC Input		3.5	4	4.5	
	12VDC Input		4.5	8	9	
	24VDC Input		11	16	18	
	48VDC Input		24	33	36	
Input Filter			Filter capacitor			
Hot Plug			Unavailable			
Ctrl *	Module turn-on		The Ctrl end is suspended or of high resistance			
	Module turn-off		Connect with high level (relative to the input grounding) to make the 5-10mA current flows into the Ctrl end.			
Note: * For use of Ctrl, please refer to the "design reference" in this manual.						

Note: * For use of Ctrl, please refer to the "design reference" in this manual.

Output Specifications

Item	Operating Conditions	Min.	Typ.	Max.	Unit
Output Voltage Accuracy ^①	5%-100% load	--	±1	±3	%
Line Regulation ^②	Full load, the input voltage is from low to high	--	±0.2	±0.5	
Load Regulation	5%-100% load	--	±0.4	±0.75	
Transient Recovery Time	25% load step change	--	0.5	3	ms
Transient Response Deviation		--	±2.5	±5	%
Temperature Coefficient	Full load	--	±0.02	±0.03	%/°C
Ripple & Noise ^③	20MHz bandwidth	See Selection Guide			
Short Circuit Protection		Continuous, self-recovery			

Note:

① Under the of 5%-100% load, the maximum output voltage accuracy of WRE2405S-3WR2 auxiliary circuit is ±4%;

② Linear Regulation for 100% load, WRE2405S-3WR2 increases to ±1%;

③ Ripple and noise are measured by "parallel cable" method, please see DC-DC Converter Application Notes for specific operation. The WRE2405S-3WR2 ripple maximum is 65 mVp-p.

General Specifications

Item	Operating Conditions	Min.	Typ.	Max.	Unit
Insulation Voltage	Input-output, with the test time of 1 minute and the leak current lower than 1mA	3000	--	--	VDC
Insulation Resistance	Input-output, isolation voltage 500VDC	1000	--	--	MΩ
Isolation Capacitance	Input-output, 100kHz/0.1V	--	30	50	pF
Operating Temperature	see Fig. 1	-40	--	+85	°C
Storage Temperature		-55	--	+125	
Casing Temperature Rise	Ta=25°C, nominal input, full load output	--	+25	--	
Pin Welding Resistance Temperature	Welding spot is 1.5mm away from the casing, 10 seconds	--	--	+300	
Storage Humidity	Non-condensing	--	--	95	%RH
Switching Frequency (PFM Mode)	Full load, nominal input voltage	--	250	--	kHz
MTBF	MIL-HDBK-217F@25°C	1000	--	--	k hours

Physical Specifications

Casing Material	Black flame-retardant and heat-resistant plastic
Dimension	22.00 x 9.50 x 12.00 mm
Weight	4.9g (Typ.)
Cooling Method	Free air convection

EMC Specifications

EMI	CE	CISPR32/EN55032	CLASS B (see Fig. 3-② for recommended circuit)	
	RE	CISPR32/EN55032	CLASS B (see Fig. 3-② for recommended circuit)	
EMS	ESD	IEC/EN61000-4-2	Contact ±4kV	perf. Criteria B
	RS	IEC/EN61000-4-3	10V/m	perf. Criteria A
	EFT	IEC/EN61000-4-4	±2kV (see Fig. 3-① for recommended circuit)	perf. Criteria B
	Surge	IEC/EN61000-4-5	line to line ±2kV (see Fig. 3-① for recommended circuit)	perf. Criteria B
	CS	IEC/EN61000-4-6	3 Vr.m.s	perf. Criteria A
	Voltage dips, short interruptions and voltage variations immunity	IEC/EN61000-4-29	0%, 70%	perf. Criteria B

Product Characteristic Curve

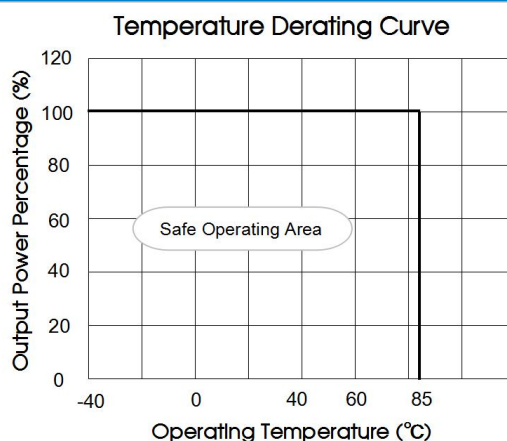
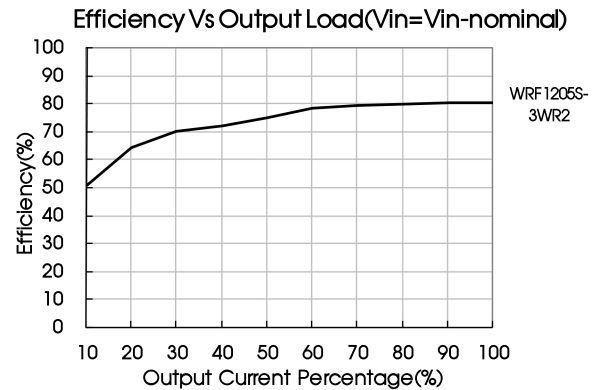
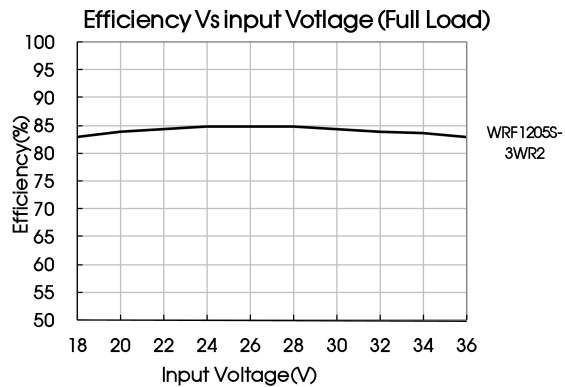
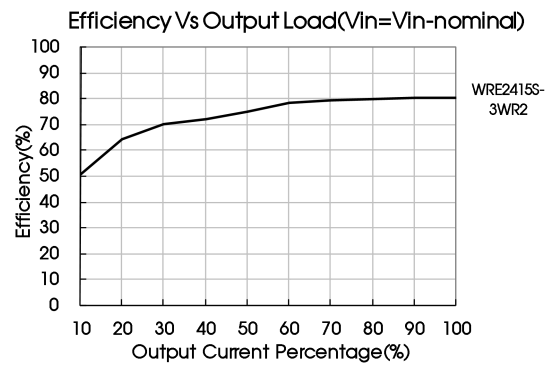
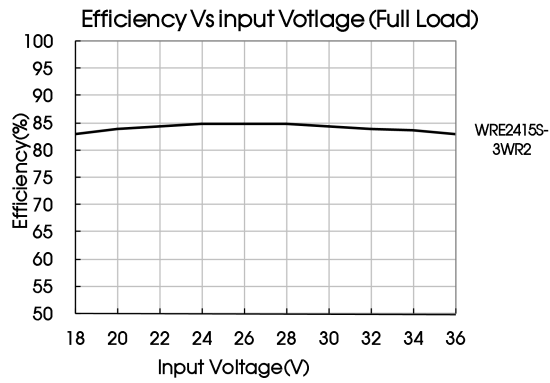


Fig 1

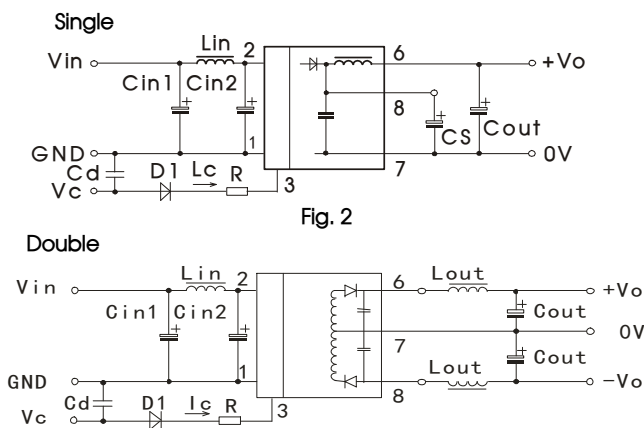


Design Reference

1. Recommended circuit

All the DC/DC converters of this series are tested according to the recommended circuit (see Fig. 2) before delivery.

If a further decrease of the input and output ripple is required, properly increase the input & output of additional capacitors C_{in1} , C_{in2} , C_s and C_{out} ; or select capacitors of low equivalent impedance like series capacitor, etc. C_s is used to reduce ripple. No need to add C_s , if ripple meets the demand. Appropriate filter capacitance shall be chosen, start-up problems may be caused if the capacitance is too large. For each output circuit, under the condition of safe and reliable operation, the max. capacity of its filter capacitor should be lower than the max. capacitive load.



V_{in}	5VDC&12VDC	24VDC&48VDC
C_{in1}	100 μ F/25VDC	10 μ F/100VDC
C_{in2}	47 μ F/25VDC	1 μ F/100VDC
L_{in}	4.7 μ H-12 μ H	
C_s	10 μ F-22 μ F/50VDC	
C_{out}	100 μ F/50VDC(Typ.)	
C_d	47nF/100V	

2. EMC solution-recommended circuit

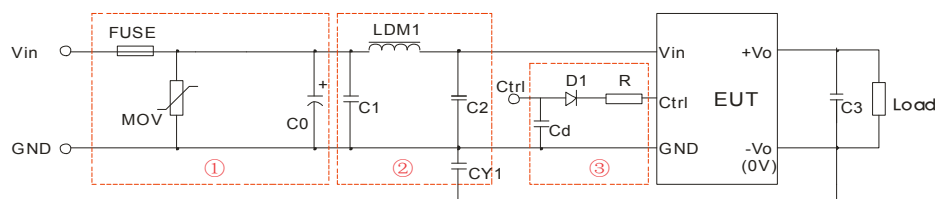


Fig. 3

Parameter description:

Model	Vin: 5VDC	Vin: 12VDC	Vin: 24VDC	Vin: 48VDC
FUSE	Selecting based on needs			
MOV	--	S14K20	S20K30	S14K60
LDM1	12 μ H	12 μ H	12 μ H	12 μ H
C0	680 μ F/25V		330 μ F/50V	330 μ F/100V
C1	4.7 μ F/50V			4.7 μ F/100V
C2	4.7 μ F/50V			4.7 μ F/100V
C3	Refer to the Cout in Fig.2			
CY1	1nF/3kV			
D1	RB160M-60V/1A			
R	In accordance with the formula: $R = \frac{V_C - V_D - 1.0}{I_C} - 300$			
Cd	47nF/100V			

- Note:
- ① Part ① in Fig. 3 is used for EMS test while part ② is used for EMI filtering; and parts ① and ② may be selected based on needs.
 - ② V_C is the voltage of the Ctrl end relative to the GND of the input grounding; V_D is the positive-going conduction pressure drop of D1; I_C is the current flows into the Ctrl end and its value is generally 5-10mA, see Fig. 3-③ for the peripheral circuit of Ctrl end;
 - ③ If there is no recommended parameters, no external component is required.

3. Ctrl end

The modules are of normal output when the Ctrl end is suspended or of high resistance; the modules turn off when connecting with high level (relative to the input grounding); notice that the current flows into the pin shall be 5 - 10mA, the modules will be permanently damaged if the current exceeds its max. value (20mA in general).

The value of R can be derived as follows:

$$R = \frac{V_C - V_D - 1.0}{I_C} - 300$$

For Detailed parameter, please refer to EMC solution-recommended circuit in this manual.

4. Input current

When the electricity is provided by the unstable power supply, please make sure that the range of the output voltage fluctuation and the ripple voltage of the power supply do not exceed the indicators of the modules. Input current of power supply should afford the flash startup current of this kind of DC/DC module(see Fig. 5).

Generally: Vin= 5V series Iave =1315mA
 Vin=12V series Iave =631mA
 Vin=24V series Iave =303mA
 Vin=48V series Iave =158mA

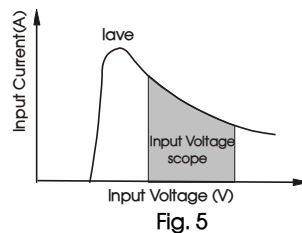


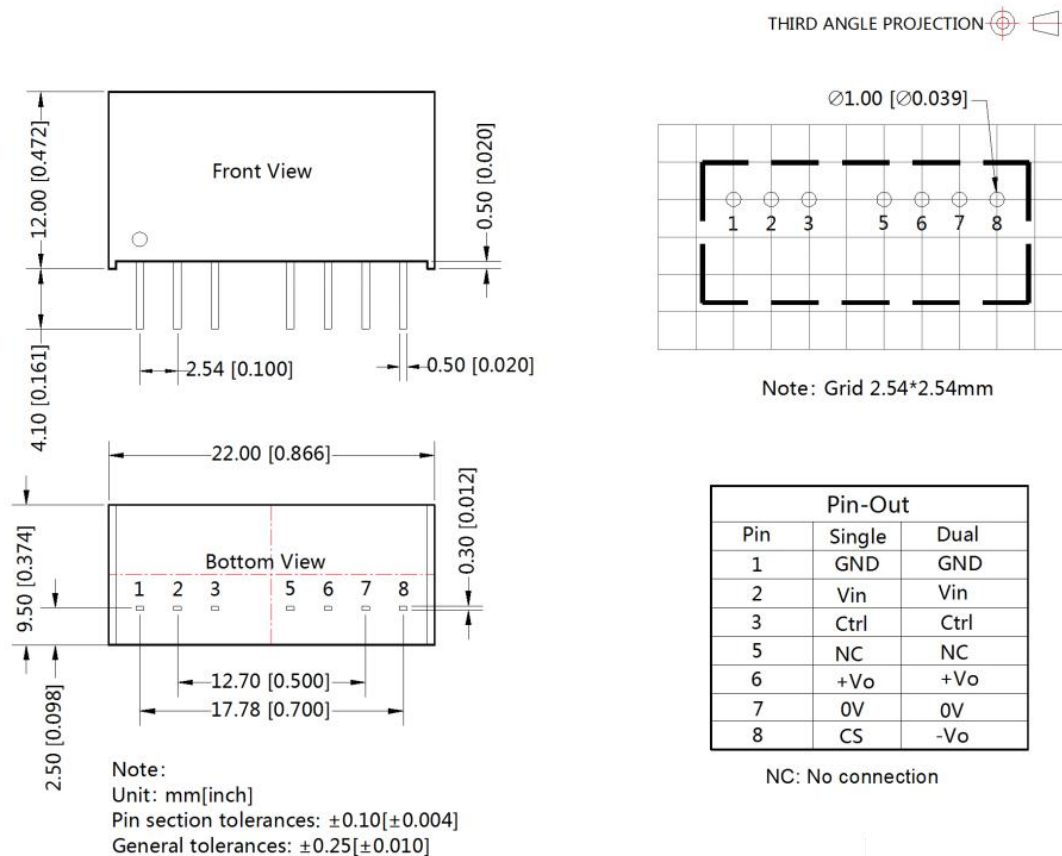
Fig. 5

5. Output load requirements

When using, the minimum load of the module output should not be less than 5% of the nominal load. In order to meet the performance parameters of this datasheet, please connect a 5% dummy load in parallel at the output end, the dummy load is generally a resistor, please note that the resistor needs to be used in derating.

6. For more information please find DC-DC converter application notes on www.mornsun-power.com

Dimensions and Recommended Layout



Note:

1. Packing information please refer to Product Packing Information which can be downloaded from www.mornsun-power.com. Packing bag number: 58210004;
2. Recommend to use module with more than 5% load, if not, the ripple of the product may exceeds the specification, but does not affect the reliability of the product;
3. The recommended unbalance degree of the dual output module load is $\leq \pm 5\%$; if the degree exceeds $\pm 5\%$, than the product performance cannot be guaranteed to comply with all parameters in the datasheet. Please contact our technicians directly for specific information;
4. The maximum capacitive load offered were tested at input voltage range and full load;
5. Unless otherwise specified, parameters in this datasheet were measured under the conditions of $T_a=25^\circ\text{C}$, humidity<75%RH with nominal input voltage and rated output load;
6. All index testing methods in this datasheet are based on company corporate standards;
7. We can provide product customization service, please contact our technicians directly for specific information;
8. Specifications are subject to change without prior notice.

Mornsun Guangzhou Science & Technology Co., Ltd.

Address: No. 8, Nanyun 4th Road, Huangpu District, Guangzhou, China
Tel: 86-20-38601850

Fax: 86-20-38601272

E-mail: info@mornsun.cn

www.mornsun-power.com